

OHIO MANUFACTURED HOMES COMMISSION

JOB #:	2006-0616	SCALE:	NTS
DRAWN:	S.E.T.	DWG. NO.:	PK N-1
CHECKED:	D.E.Z.	SHEET:	
TITLE:	PARK INSTALLATION NOTES	DATE:	1 OF 17
			8/31/07

NOTES

1. FOUNDATION AND ITS STRUCTURAL ELEMENTS SHALL BE CAPABLE OF ACCOMMODATING ALL SUPERIMPOSED LIVE, DEAD, AND OTHER LOADS IN ACCORDANCE WITH APPLICABLE CODES AND ALL LATERAL LOADS IN ACCORDANCE WITH ACCEPTED DESIGN PRACTICES.
2. LOTS SHALL BE PROVIDED WITH ADEQUATE DRAINAGE AND SHALL BE GRADED SO AS TO DRAIN SURFACE WATER AWAY FROM FOUNDATION. (MIN SLOPE 5 IN. IN 10 FT.) EXTERIOR FOOTINGS SHALL HAVE FOOTING DRAINS WITH GRAVEL. SEE CODE SECTIONS 4781-6-02.2(C)(3)(8 AND 9) AND 4781-6-02.2 (D)(3)(D)
3. MATERIALS SHALL CONFORM TO APPLICABLE STANDARDS AND CODES.
4. CONCRETE SHALL HAVE A MINIMUM COMPRESSIVE STRENGTH OF - 3000 PSI (3500 PSI WHERE SUBJECT TO WEATHERING). SEE 4781-6-02.2C
5. RESERVED
6. RESERVED
7. 6-MIL POLY GROUND VAPOR RETARDER REQUIRED PER 4781-6-02.5(E) SEAMS OVERLAPPED 12" AND SEALED.
8. CROSS-VENTILATION AS REQUIRED BY CODE AND/OR AS FOLLOWS. PROVIDE 1 SQ. FT. OF VENTILATION AREA FOR EACH 1500 SQ. FT. OF CRAWL SPACE FLOOR AREA. USE CORROSION RESISTANT MESH (1/8 IN. MESH) OR EQUAL MIN 4 PER 4781-6-02.5(E).
9. BLOCKS SHALL BE DRY STACKS WITH OR WITHOUT SURFACE BOND OR MORTAR. MORTAR, WHEN USED, SHALL BE TYPE "S" OR "M".
10. PIERS SHALL BE AS SHOWN ON THE PLAN ABOVE AND/OR AS FOLLOWS: PIERS ARE TO BE LOCATED UNDER THE I-BEAM NOT MORE THAN 2 FEET FROM EACH END ALTERNATIVELY THE ENDS OF THE FRAME CAN BE SUPPORTED BY THE END WALL. NO MORE THAN 8 FEET O.C. BETWEEN THE PIERS. EACH PIER IS TO BE CONSTRUCTED TO CARRY A VERTICAL DESIGN LOAD OF 8,000 LBS. (DOUBLE STACK).
11. EXTRA PIERS TO BE PLACED TO SUPPORT ADDITIONAL LOADS, SUCH AS MASONRY BLOCK FIREPLACES, AS REQUIRED.
12. RESERVED
13. MASONRY BLOCK PIERS MAY BE SINGLE STACKED UP TO A HEIGHT OF 3 FT. MINIMUM $\frac{3}{8}$ " x 5 IN. LAG SCREWS WITH FLAT WASHERS ARE REQUIRED FOR SINGLE-PLY MATE LINES; MULTI-PLY MATE LINES REQUIRE MINIMUM $\frac{3}{8}$ " x 7 IN. LAG SCREWS WITH FLAT WASHERS. LAGS TO BE CENTERED AT EACH FLOOR JOIST SPACE ON ALTERNATE SIDES WHERE POSSIBLE.
14. PIER LOCATION CAN BE ADJUSTED UP TO 8 INCHES FOR UTILITY DROPS OR OTHER INTERFERENCE.
15. RESERVED
16. INSIDE GRADE IS SHOWN AT TOP OF INSIDE FOOTING THROUGHOUT. SEE CODE SECTION 4781-6-02.3(E). GRADE MAY BE HIGHER AS LONG AS MIN. CLEARANCE IS MAINTAINED.
17. FRAME CLAMPS PER FRAME CLAMP MANUFACTURERS INSTALLATION INSTRUCTIONS.
18. SHEAR WALL AND LONGITUDINAL BRACKETS SHALL BE PROPERLY STRAPPED TO GROUND ANCHORS WHEN REQUIRED BY MANUFACTURER.

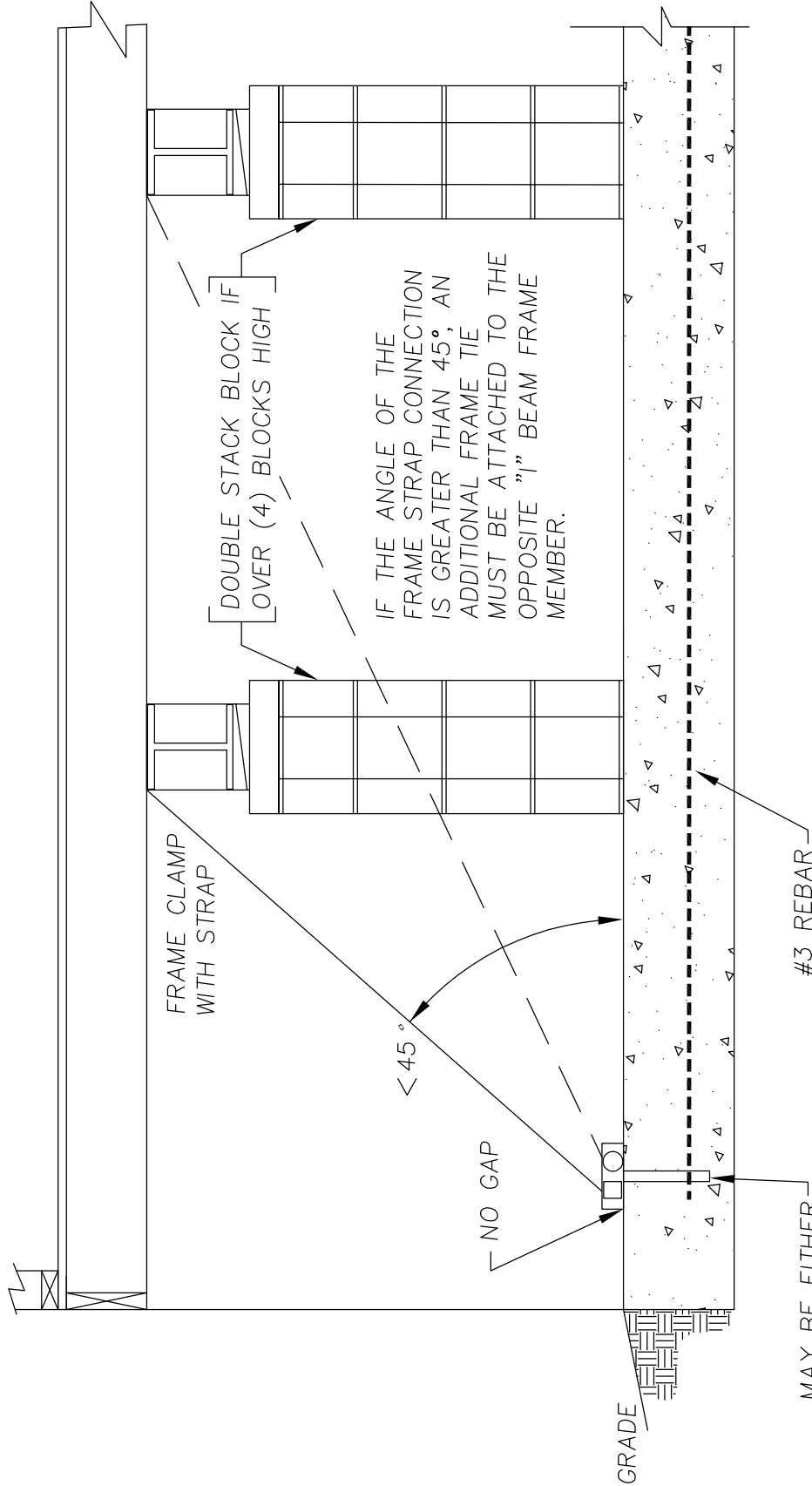
OHIO MANUFACTURED HOMES COMMISSION

JOB #: 2006-0616
 DRAWN: S.E.T.
 CHECKED: D.E.Z.
 DATE: 8/31/07

SCALE: NTS
 DWG. NO.: PK N-2
 SHEET: 2 OF 17

TITLE: PARK-FRAME TIE TO ANCHOR

ANCHORING EQUIPMENT SHALL HAVE A MINIMUM
 WORKING LOAD RATED CAPACITY EQUAL TO 3150 LBS
 MAX SPACING 8 FT. O/C



IF THE ANGLE OF THE
 FRAME STRAP CONNECTION
 IS GREATER THAN 45°, AN
 ADDITIONAL FRAME TIE
 MUST BE ATTACHED TO THE
 OPPOSITE "1" BEAM FRAME
 MEMBER.

DOUBLE STACK BLOCK IF
 OVER (4) BLOCKS HIGH

FRAME CLAMP
 WITH STRAP

<45°

NO GAP

MAY BE EITHER
 CAST IN PLACE OR
 POST INSTALLED
 PER MFG. SPEC

#3 REBAR

GRADE

TIE DOWN DETAIL

BASED ON MAX ROOF PITCH 20°(4:12)
 MAX WALL HEIGHT 7.5 FT.

OHIO MANUFACTURED HOMES COMMISSION

JOB #: 2006-0616
 DRAWN: G.A.I./S.E.T.
 CHECKED: D.E.Z.
 DATE: 8/31/07

SCALE: NTS
 DWG. NO.: PK N-2b
 SHEET: 3 OF 17

TITLE: PARK-FRAME TIE TO ANCHOR (CROSS SECTION)

ANCHORING EQUIPMENT SHALL HAVE A MINIMUM
 WORKING LOAD RATED CAPACITY EQUAL TO 3150 LBS
 MAX SPACING 8 FT. O/C

PIER LOCATED
 WITHIN 8 IN. OF ANCHOR

FRAME CLAMP
 WITH STRAP

DOUBLE STACK BLOCK PIERS
 IF OVER (4) BLOCKS HIGH

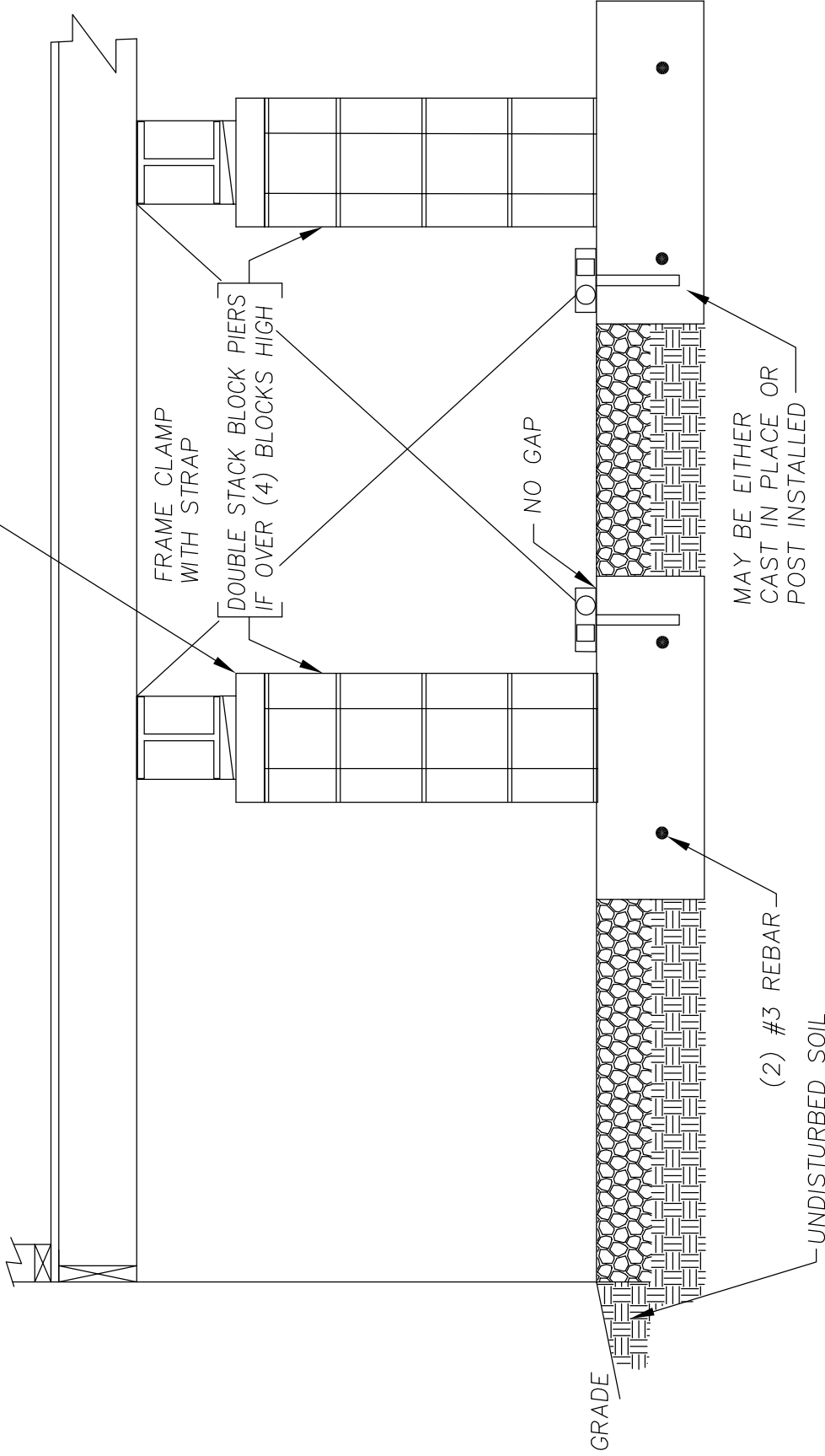
NO GAP

MAY BE EITHER
 CAST IN PLACE OR
 POST INSTALLED

(2) #3 REBAR
 UNDISTURBED SOIL

TIE DOWN DETAIL

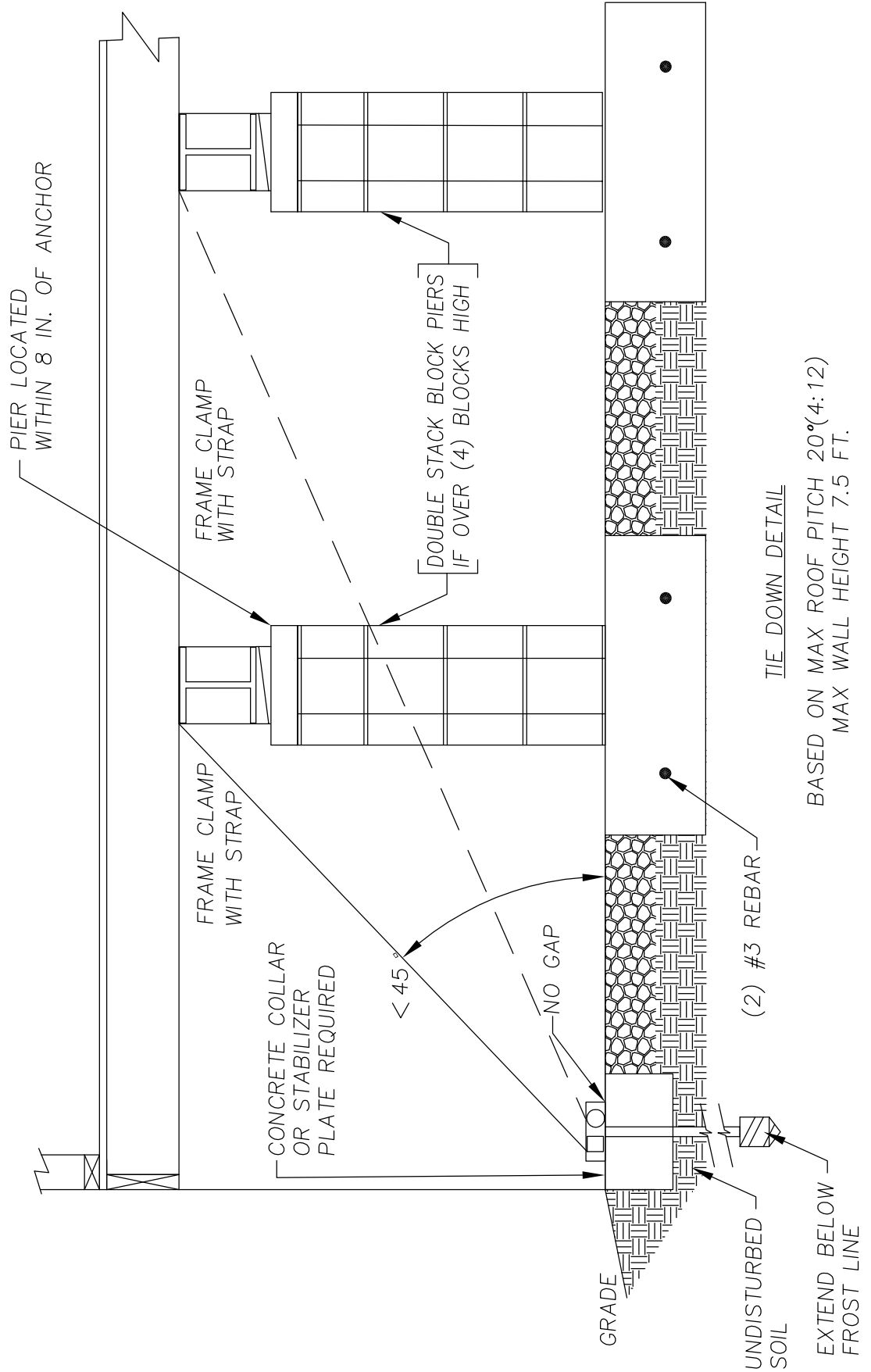
BASED ON MAX ROOF PITCH 20°(4:12)
 MAX WALL HEIGHT 7.5 FT.



OHIO MANUFACTURED HOMES COMMISSION

JOB #:	2006-0616	SCALE:	NTS
DRAWN:	G.A.I./S.E.T.	DWG. NO.:	PK N-2C
CHECKED:	D.E.Z.	SHEET:	
TITLE:	PARK-FRAME TIE TO ANCHOR (AUGER OPTION)		4 OF 17
DATE:	8/31/07		

ANCHORING EQUIPMENT SHALL HAVE A MINIMUM
WORKING LOAD RATED CAPACITY EQUAL TO 3150 LBS
MAX SPACING 8 FT. O/C

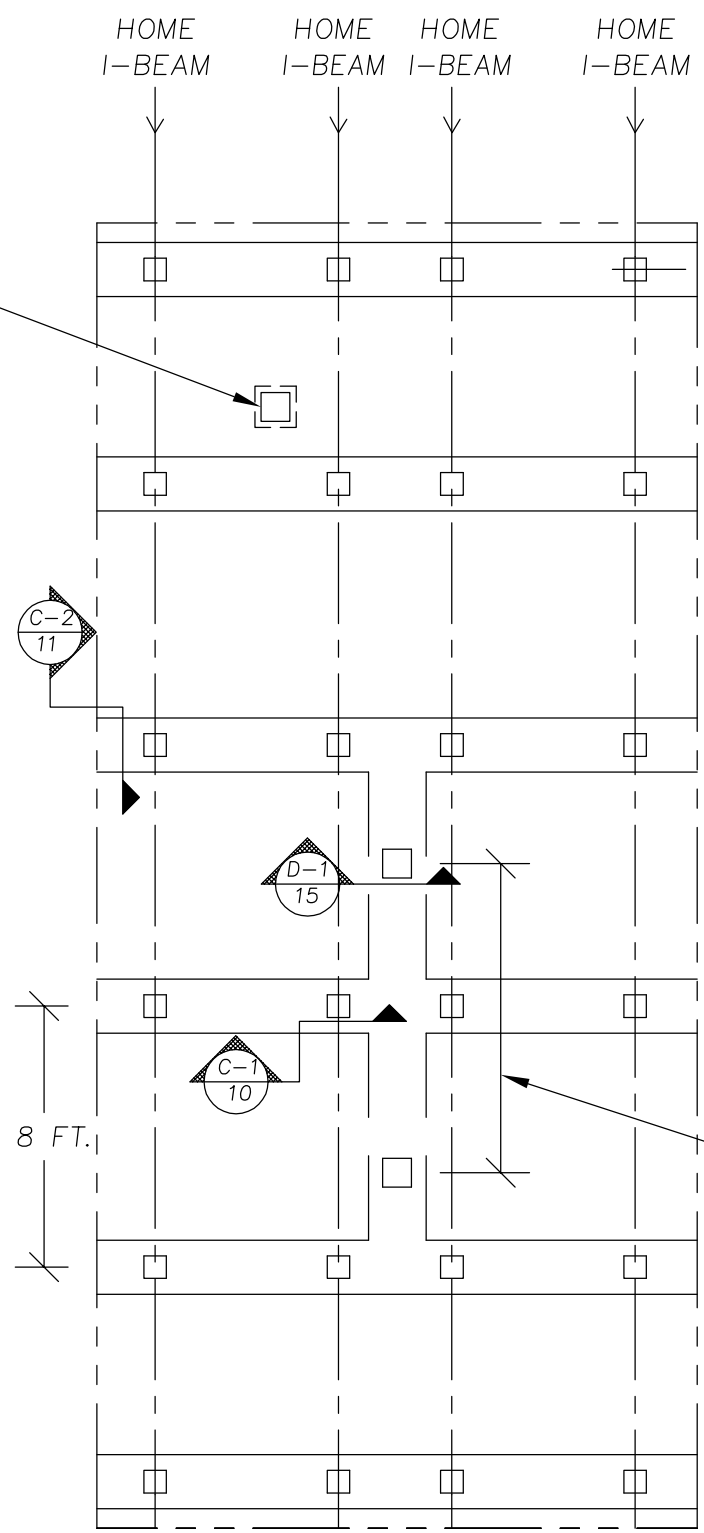


OHIO MANUFACTURED HOMES COMMISSION

JOB #:	2006-0616	SCALE:	NTS
DRAWN:	G.A.I./S.E.T.	DWG. NO.:	PK F-3a
CHECKED:	D.E.Z.	SHEET:	
DATE:	8/31/07		5 OF 17

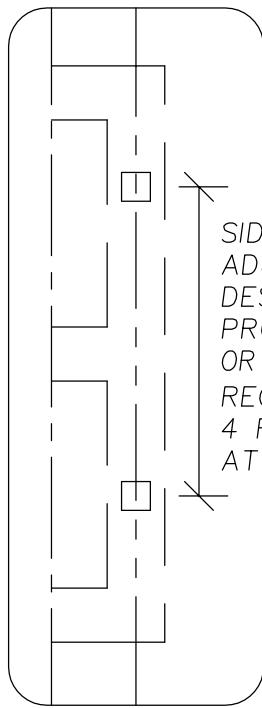
TITLE: PARK-FOUNDATION PLAN OPTION 1

EXTRA PIERS TO BE PLACED TO SUPPORT ADDITIONAL LOADS, SUCH AS MASONRY BLOCK FIREPLACES, AS REQUIRED.



2 FT. MAX. TYP.

WHEN REQUIRED



SIDEWALL PIERS OR ADJUSTABLE OUTRIGGERS DESIGNED BY AN OHIO PROFESSIONAL ENGINEER OR REGISTERED ARCHITECT REQ'D AT OPENINGS OF 4 FT. AND LARGER AND AT ALL EXIT DOORS

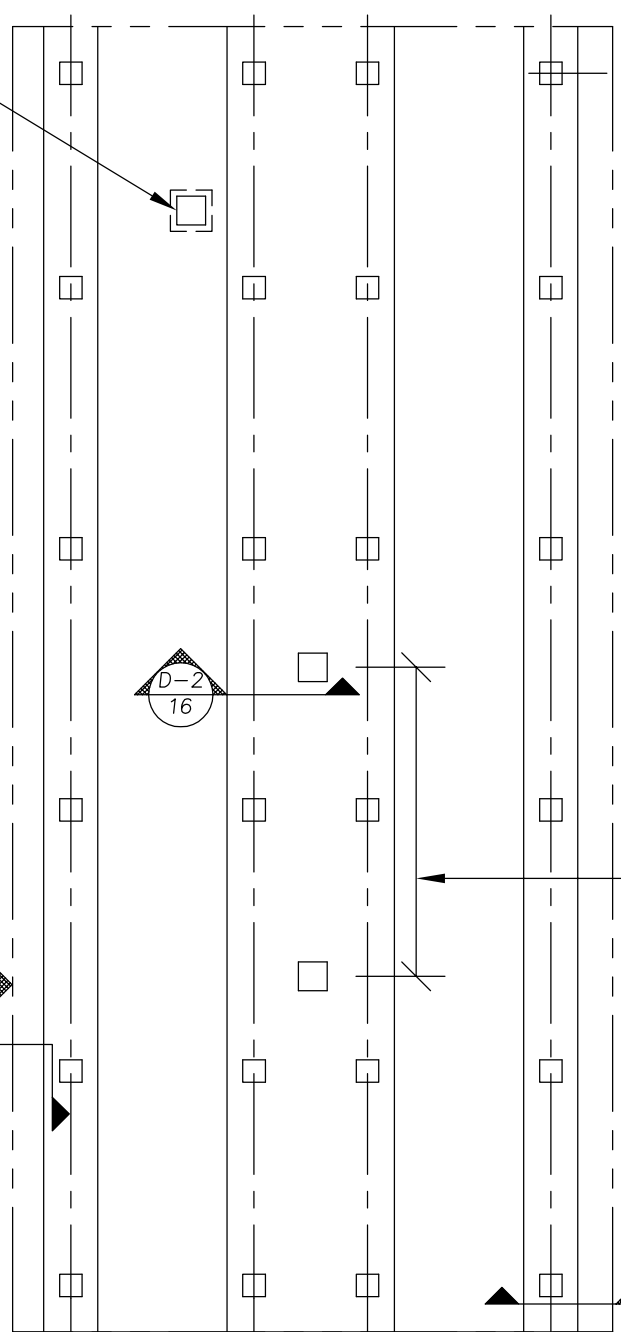
MATELINE PIERS REQ'D AT OPENINGS OF 4 FT. AND LARGER

OHIO MANUFACTURED HOMES COMMISSION

JOB #:	2006-0616	SCALE:	NTS
DRAWN:	G.A.I./S.E.T.	DWG. NO.:	PK F-3aa
CHECKED:	D.E.Z.	SHEET:	
TITLE:	PARK-FOUNDATION PLAN OPTION 2		6 OF 17
DATE:	8/31/07		

EXTRA PIERS TO BE PLACED TO SUPPORT ADDITIONAL LOADS, SUCH AS MASONRY BLOCK FIREPLACES, AS REQUIRED.

HOME I-BEAM HOME I-BEAM HOME I-BEAM HOME I-BEAM



2 FT. MAX. TYP.

WHEN REQUIRED

SIDEWALL PIERS OR ADJUSTABLE OUTRIGGERS DESIGNED BY AN OHIO PROFESSIONAL ENGINEER OR REGISTERED ARCHITECT REQ'D AT OPENINGS OF 4 FT. AND LARGER AND AT ALL EXIT DOORS

MATELINE PIERS REQ'D AT OPENINGS OF 4 FT. AND LARGER

C-4/13

D-2/16

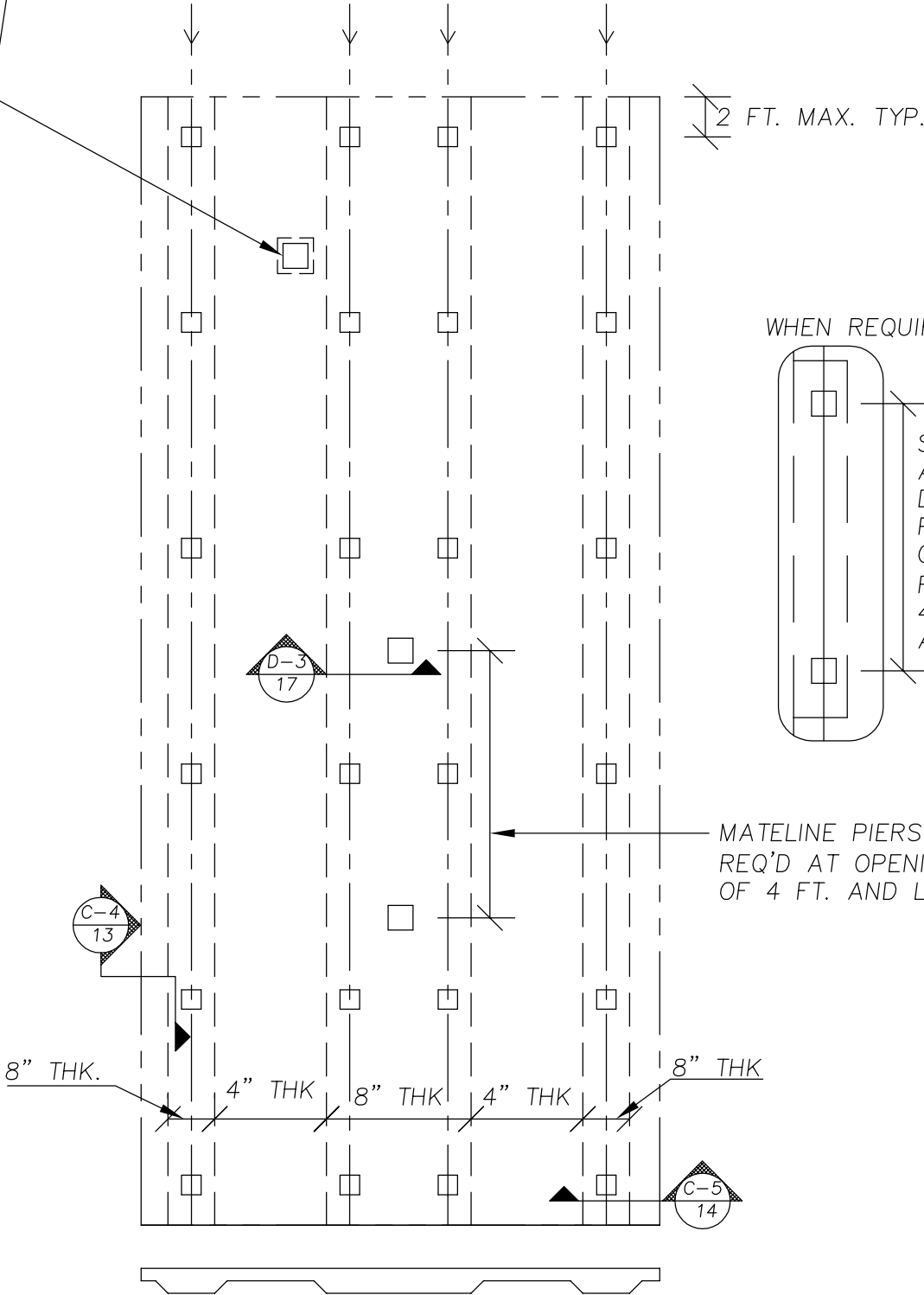
C-3/12

OHIO MANUFACTURED HOMES COMMISSION

JOB #:	2006-0616	SCALE:	NTS
DRAWN:	G.A.I./S.E.T.	DWG. NO.:	PK F-3aaa
CHECKED:	D.E.Z.	SHEET:	
TITLE:	PARK-FOUNDATION PLAN OPTION 3 (SLAB)		7 OF 17
DATE:	8/31/07		

EXTRA PIERS TO BE PLACED TO SUPPORT ADDITIONAL LOADS, SUCH AS MASONRY BLOCK FIREPLACES, AS REQUIRED

HOME I-BEAM HOME I-BEAM HOME I-BEAM HOME I-BEAM



WHEN REQUIRED

SIDEWALL PIERS OR ADJUSTABLE OUTRIGGERS DESIGNED BY AN OHIO PROFESSIONAL ENGINEER OR REGISTERED ARCHITECT REQ'D AT OPENINGS OF 4 FT. AND LARGER AND AT ALL EXIT DOORS

MATELINE PIERS REQ'D AT OPENINGS OF 4 FT. AND LARGER

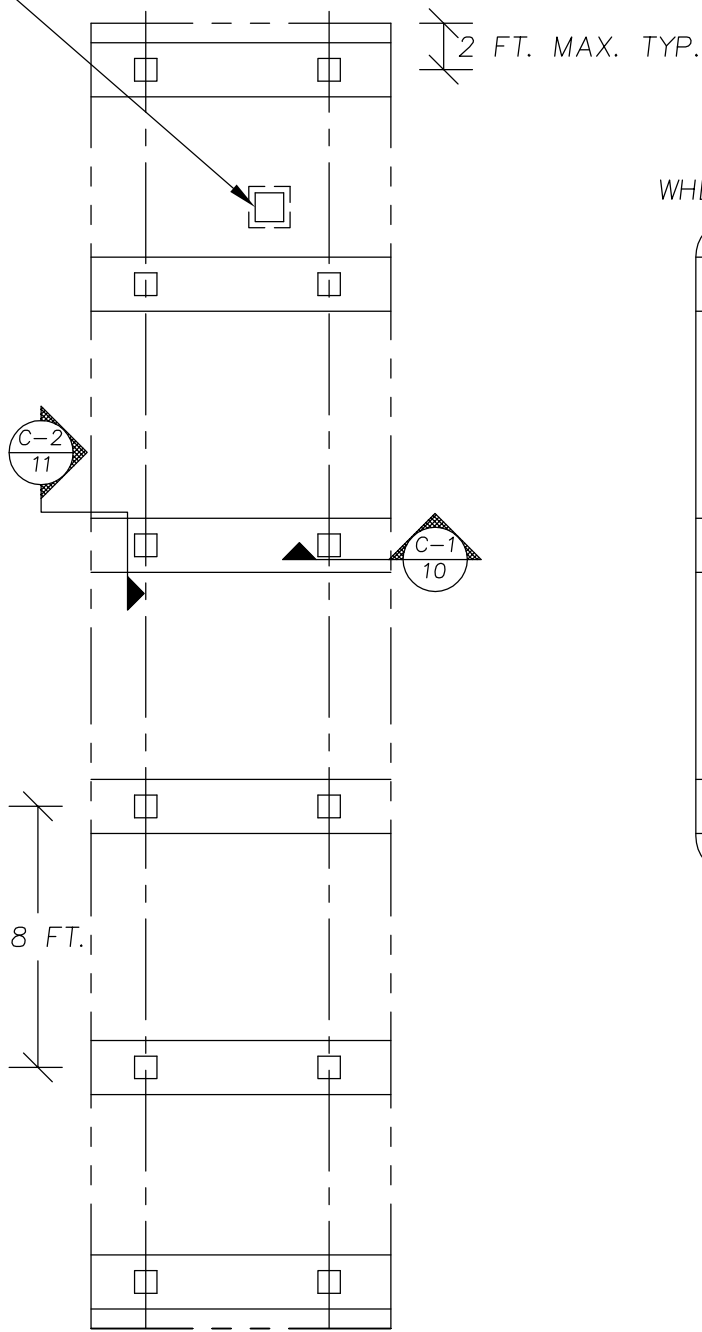
8" THK. 4" THK 8" THK 4" THK 8" THK

OHIO MANUFACTURED HOMES COMMISSION

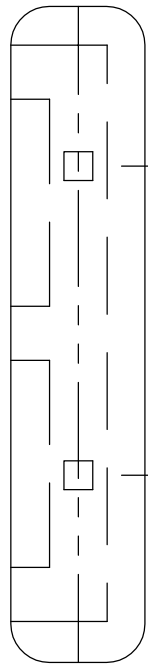
JOB #:	2006-0616	SCALE:	NTS
DRAWN:	G.A.I./S.E.T.	DWG. NO.:	PK F-3b
CHECKED:	D.E.Z.	SHEET:	
TITLE:	PARK-FOUNDATION PLAN OPTION 1 (SINGLE)	DATE:	8 OF 17
			8/31/07

EXTRA PIERS TO BE PLACED TO SUPPORT ADDITIONAL LOADS, SUCH AS MASONRY BLOCK FIREPLACES, AS REQUIRED.

HOME I-BEAM HOME I-BEAM



WHEN REQUIRED



SIDEWALL PIERS OR ADJUSTABLE OUTRIGGERS DESIGNED BY AN OHIO PROFESSIONAL ENGINEER OR REGISTERED ARCHITECT REQ'D AT OPENINGS OF 4 FT. AND LARGER AND AT ALL EXIT DOORS

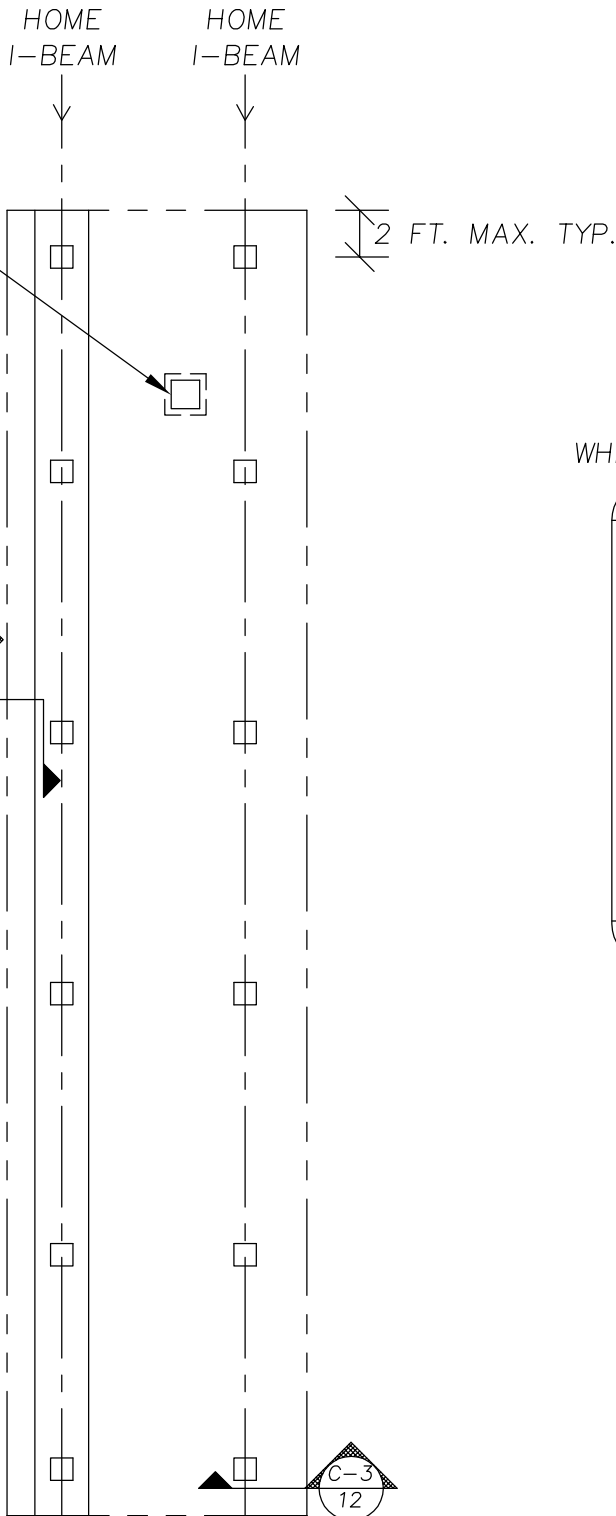
OHIO MANUFACTURED HOMES COMMISSION

JOB #: 2006-0616
DRAWN: G.A.I./S.E.T.
CHECKED: D.E.Z.
DATE: 8/31/07

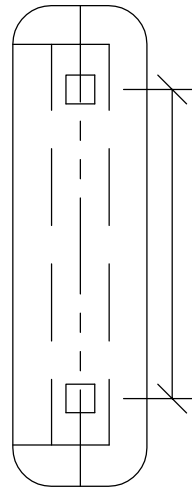
SCALE: NTS
DWG. NO.: **PK F-3bb**
SHEET: **9 OF 17**

TITLE: PARK-FOUNDATION PLAN OPTION 2 (SINGLE)

EXTRA PIERS TO BE PLACED TO SUPPORT ADDITIONAL LOADS, SUCH AS MASONRY BLOCK FIREPLACES, AS REQUIRED.



WHEN REQUIRED



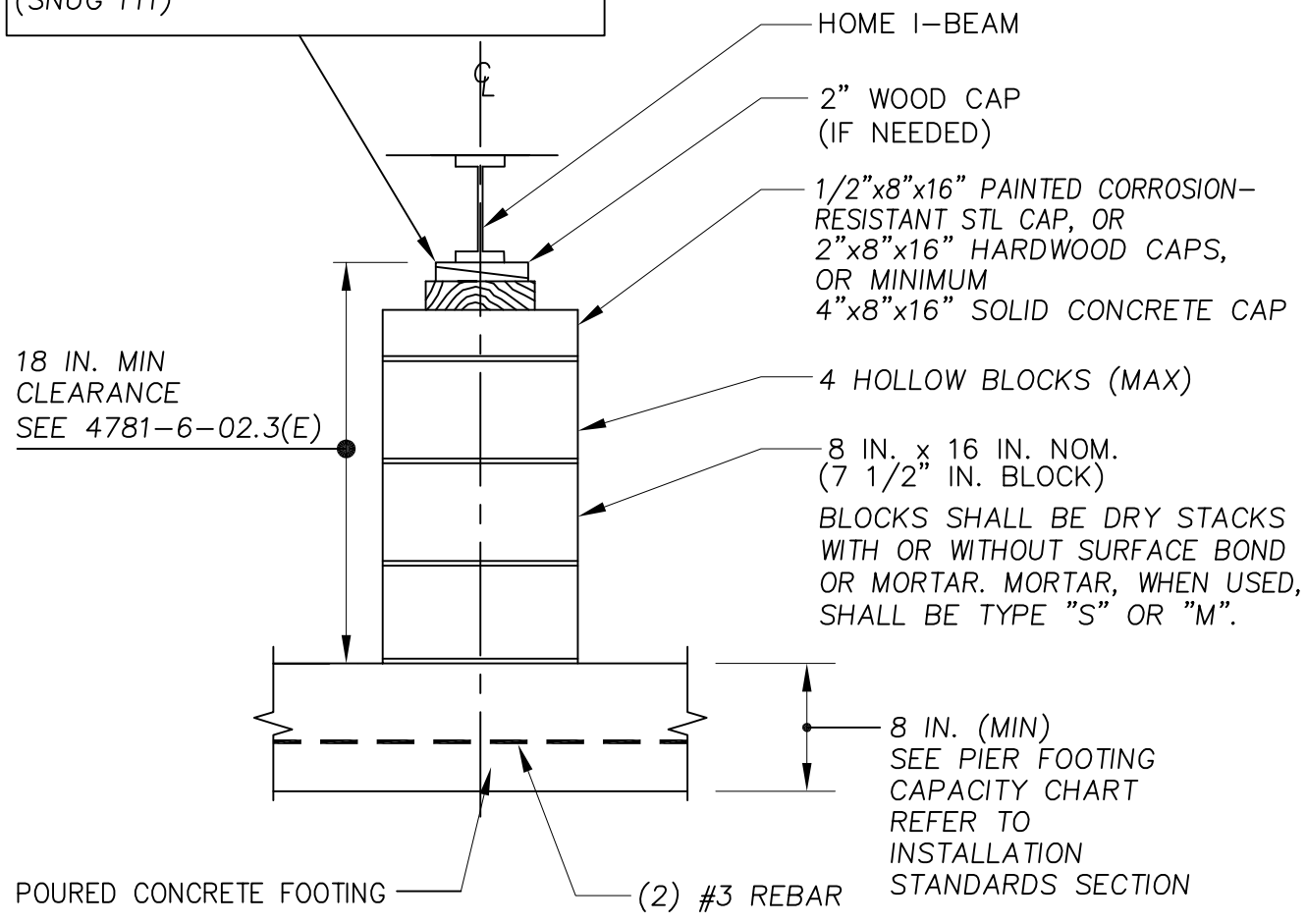
SIDEWALL PIERS OR ADJUSTABLE OUTRIGGERS DESIGNED BY AN OHIO PROFESSIONAL ENGINEER OR REGISTERED ARCHITECT REQ'D AT OPENINGS OF 4 FT. AND LARGER AND AT ALL EXIT DOORS

OHIO MANUFACTURED HOMES COMMISSION

JOB #:	2006-0616	SCALE:	NTS
DRAWN:	G.A.I./S.E.T.	DWG. NO.:	PK C-1
CHECKED:	D.E.Z.	SHEET:	
TITLE:	PARK-I-BEAM PIER OPTION1 END VIEW		10 OF 17
DATE:	8/31/07		

SHIM NOTE:
 GAP AT TOP OF PIER MAY BE SHIMMED WITH HARDWOOD WEDGES AND WOOD PLATE (NOT EXCEEDING 2.5 IN. THICKNESS AND WEDGES (IN PAIRS) NOT EXCEEDING 1 IN. THICKNESS. WEDGES SHALL BE AT LEAST 4 IN. WIDE AND 6 IN. LONG. (SNUG FIT)

NOTE:
 DOUBLE STACK BLOCK PIERS IF OVER (4) BLOCKS HIGH



TYP. @ I-BEAM LOCATIONS

OHIO MANUFACTURED HOMES COMMISSION

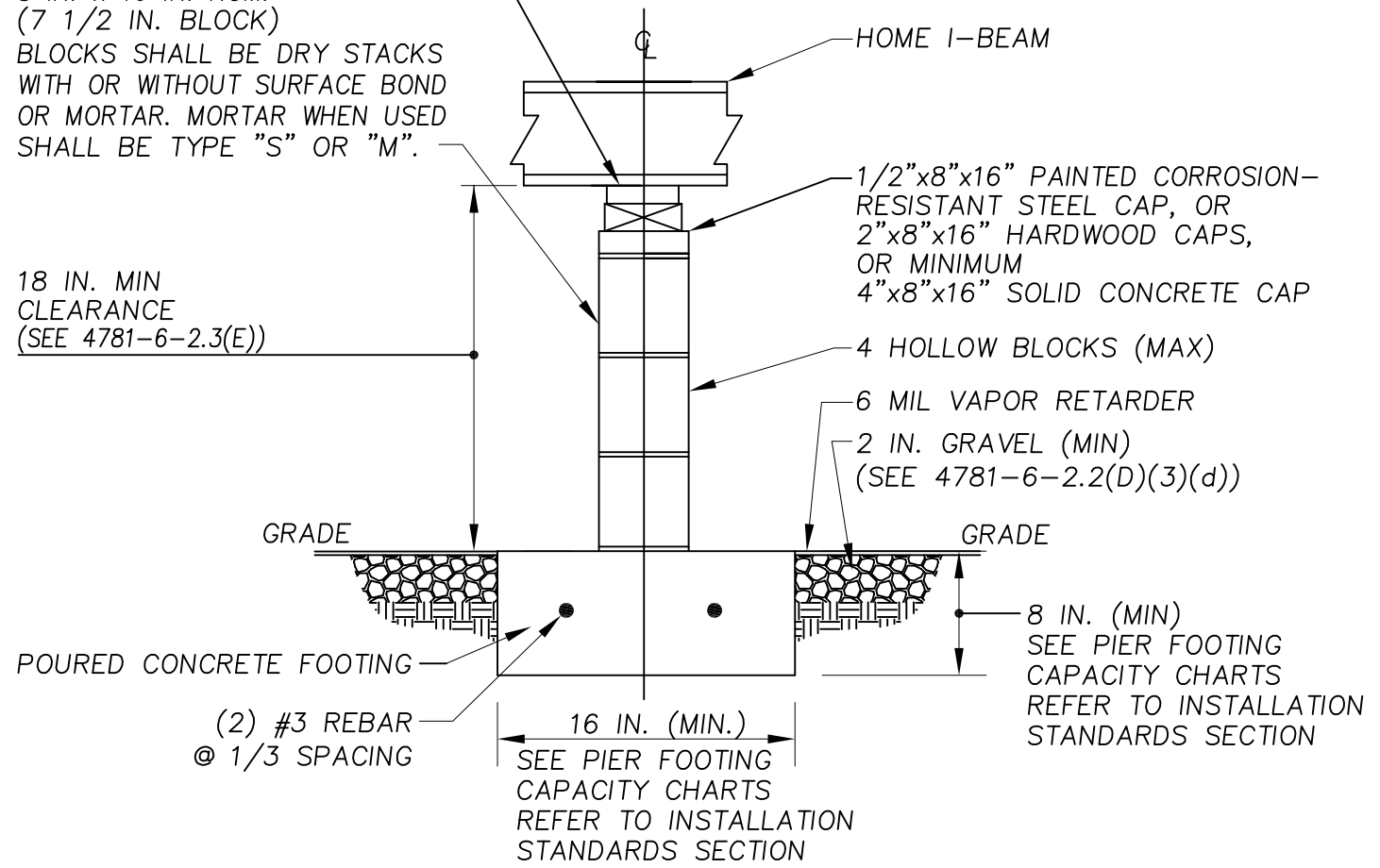
JOB #:	2006-0616	SCALE:	NTS
DRAWN:	G.A.I./S.E.T.	DWG. NO.:	PK C-2
CHECKED:	D.E.Z.	SHEET:	
TITLE:	PARK-I-BEAM PIER OPTION 1 SIDE VIEW	DATE:	11 OF 17

SHIM NOTE:
 GAP AT TOP OF PIER MAY BE SHIMMED WITH HARDWOOD WEDGES AND WOOD PLATE (NOT EXCEEDING 2.5 IN. THICKNESS) AND WEDGES (IN PAIRS) NOT EXCEEDING 1 IN. THICKNESS. WEDGES SHALL BE AT LEAST 4 IN. WIDE AND 6 IN. LONG. (SNUG FIT). WEDGES TO BE INSTALLED PERPENDICULAR TO C OF BEAM.

NOTE:
 DOUBLE STACK BLOCK PIERS IF OVER (4) BLOCKS HIGH.

8 IN. x 16 IN. NOM.
 (7 1/2 IN. BLOCK)
 BLOCKS SHALL BE DRY STACKS WITH OR WITHOUT SURFACE BOND OR MORTAR. MORTAR WHEN USED SHALL BE TYPE "S" OR "M".

18 IN. MIN CLEARANCE
 (SEE 4781-6-2.3(E))



TYP. @ I-BEAM LOCATIONS

OHIO MANUFACTURED HOMES COMMISSION

JOB #:	2006-0616	SCALE:	NTS
DRAWN:	G.A.I./S.E.T.	DWG. NO.:	PK C-3
CHECKED:	D.E.Z.	SHEET:	
TITLE:	PARK-I-BEAM PIER OPTION 2 END VIEW		12 OF 17
DATE:	8/31/07		

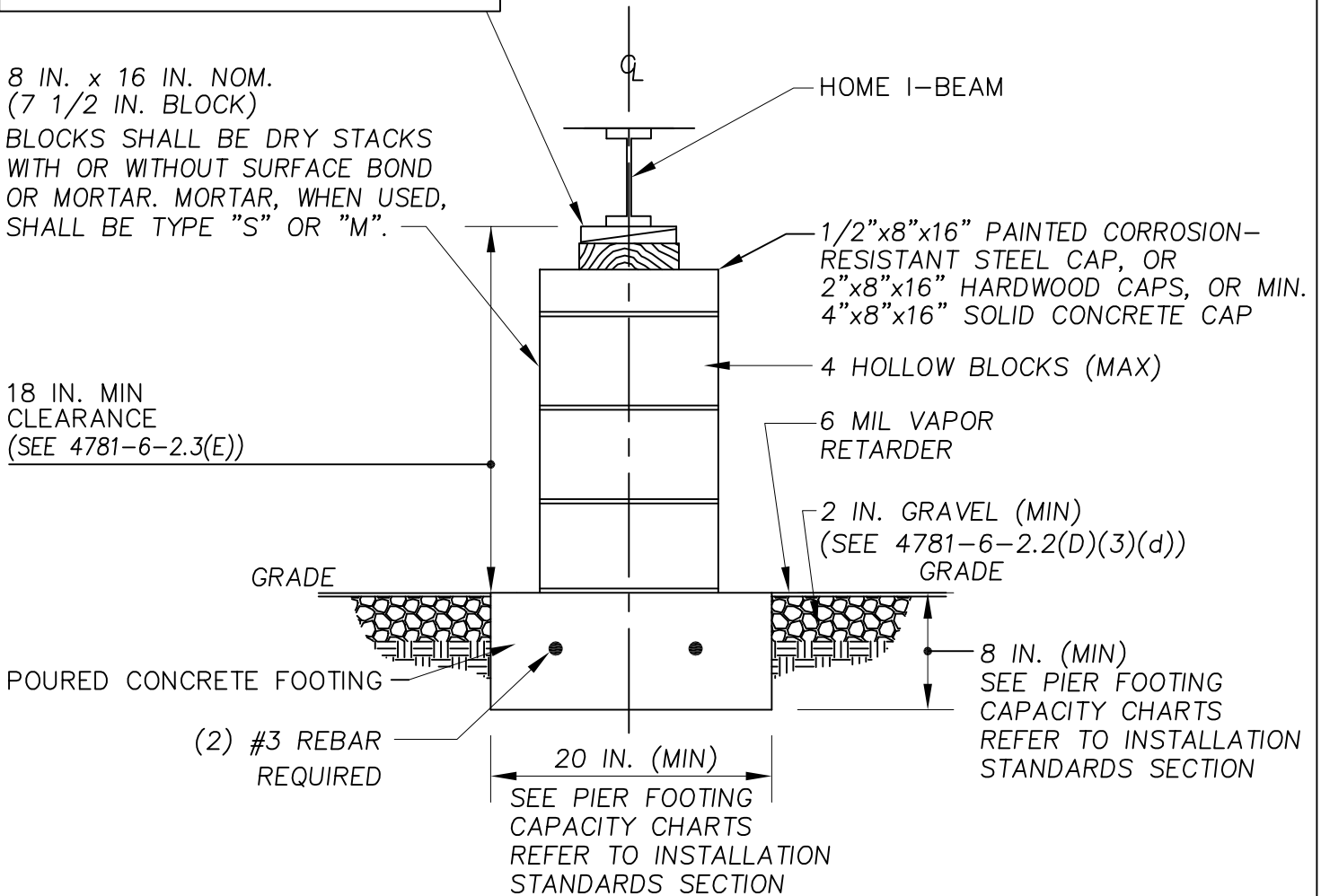
SHIM NOTE:
 GAP AT TOP OF PIER MAY BE SHIMMED WITH HARDWOOD WEDGES AND WOOD PLATE (NOT EXCEEDING 2.5 IN. THICKNESS AND WEDGES (IN PAIRS) NOT EXCEEDING 1 IN. THICKNESS. WEDGES SHALL BE AT LEAST 4 IN. WIDE AND 6 IN. LONG. (SNUG FIT)

NOTE:
 DOUBLE STACK BLOCK PIERS IF OVER (4) BLOCKS HIGH

8 IN. x 16 IN. NOM.
 (7 1/2 IN. BLOCK)

BLOCKS SHALL BE DRY STACKS WITH OR WITHOUT SURFACE BOND OR MORTAR. MORTAR, WHEN USED, SHALL BE TYPE "S" OR "M".

18 IN. MIN CLEARANCE
 (SEE 4781-6-2.3(E))



TYP. @ I-BEAM LOCATIONS

OHIO MANUFACTURED HOMES COMMISSION

JOB #:	2006-0616	SCALE:	NTS
DRAWN:	G.A.I./S.E.T.	DWG. NO.:	PK C-4
CHECKED:	D.E.Z.	SHEET:	
TITLE:	PARK-I-BEAM PIER OPTION 2 SIDE VIEW		13 OF 17
DATE:	9/01/07		

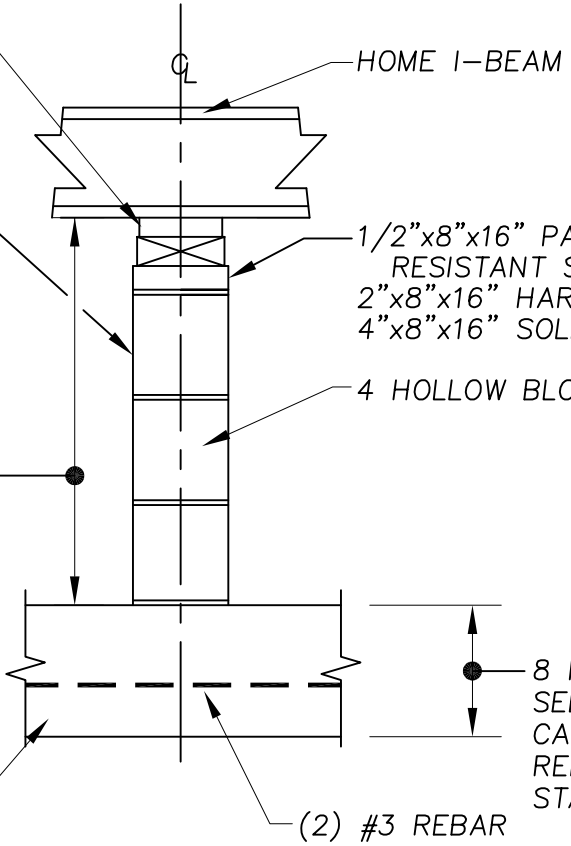
SHIM NOTE:
 GAP AT TOP OF PIER MAY BE SHIMMED WITH HARDWOOD WEDGES AND WOOD PLATE (NOT EXCEEDING 2.5 IN. THICKNESS) AND WEDGES (IN PAIRS) NOT EXCEEDING 1 IN. THICKNESS. WEDGES SHALL BE AT LEAST 4 IN. WIDE AND 6 IN. LONG. (SNUG FIT). WEDGES TO BE INSTALLED PERPENDICULAR TO ϕ OF BEAM.

NOTE:
 DOUBLE STACK BLOCK PIERS IF OVER (4) BLOCKS HIGH

8 IN. x 16 IN. NOM.
 (7 1/2 IN. BLOCK)

BLOCKS SHALL BE DRY STACKS WITH OR WITHOUT SURFACE BOND OR MORTAR. MORTAR, WHEN USED, SHALL BE TYPE "S" OR "M".

18 IN. MIN CLEARANCE
 (SEE 4781-6-2.3(E))



8 IN. (MIN)
 SEE PIER FOOTING CAPACITY CHARTS REFER TO INSTALLATION STANDARDS SECTION

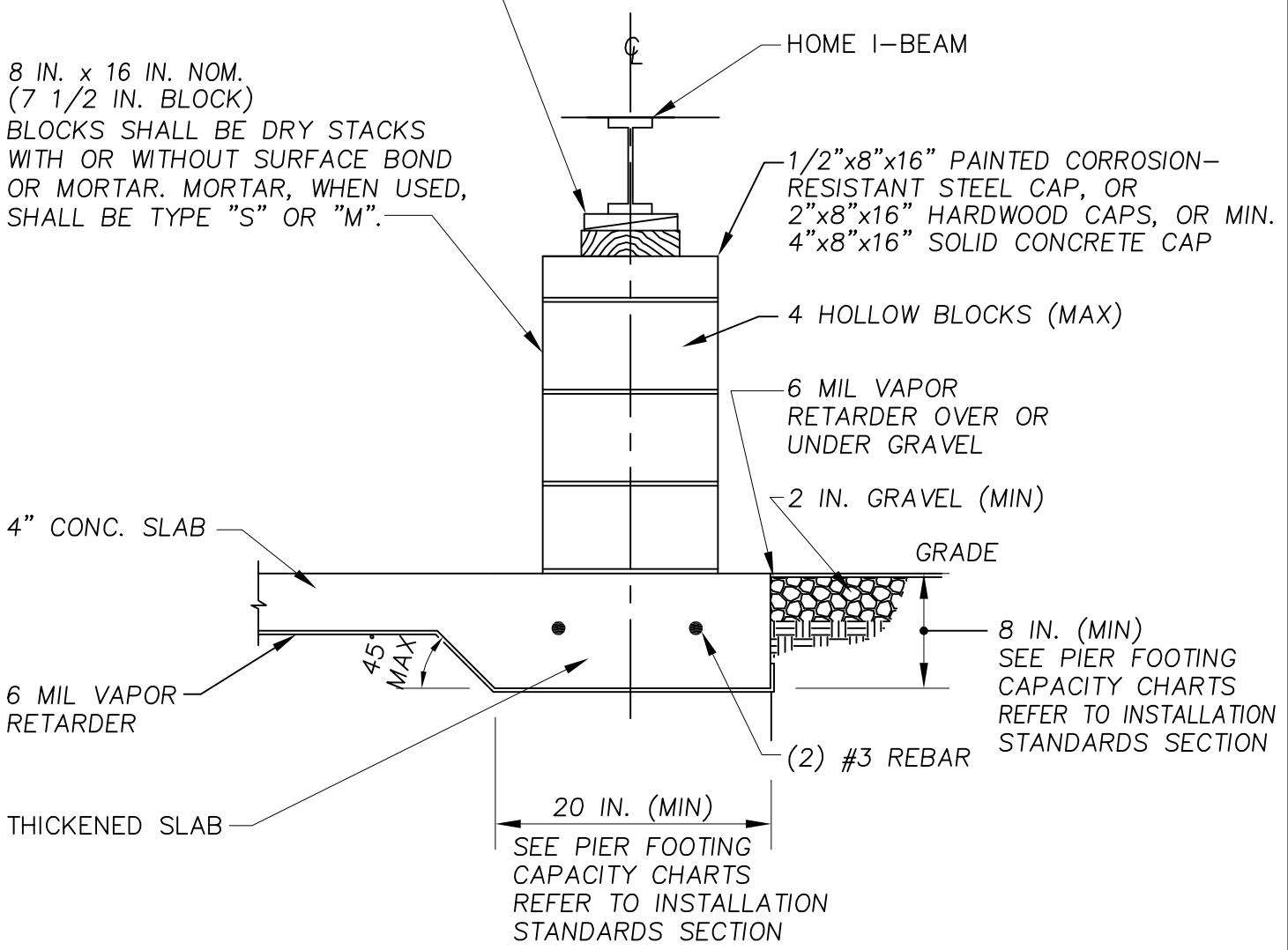
TYP. @ I-BEAM LOCATIONS

OHIO MANUFACTURED HOMES COMMISSION

JOB #:	2006-0616	SCALE:	NTS
DRAWN:	G.A.I./S.E.T.	DWG. NO.:	PK C-5
CHECKED:	D.E.Z.	SHEET:	
TITLE:	PARK-I-BEAM PIER OPTION 3 (SLAB) END VIEW		14 OF 17
DATE:	8/31/07		

SHIM NOTE:
 GAP AT TOP OF PIER MAY BE SHIMMED WITH HARDWOOD WEDGES AND WOOD PLATE (NOT EXCEEDING 2.5 IN. THICKNESS AND WEDGES (IN PAIRS) NOT EXCEEDING 1 IN. THICKNESS. WEDGES SHALL BE AT LEAST 4 IN. WIDE AND 6 IN. LONG. (SNUG FIT)

NOTE:
 DOUBLE STACK BLOCK PIERS IF OVER (4) BLOCKS HIGH.



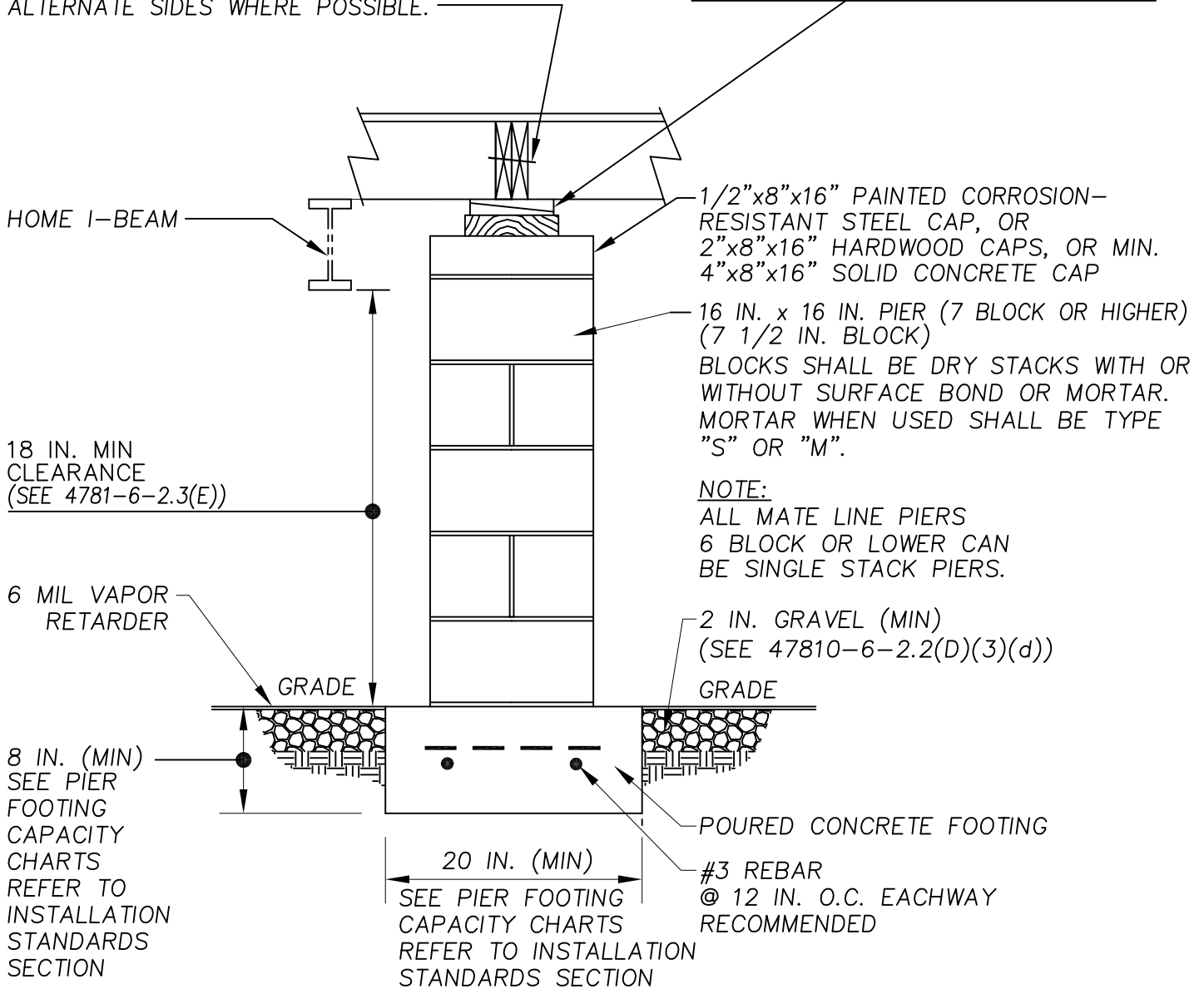
TYP. @ I-BEAM LOCATIONS

OHIO MANUFACTURED HOMES COMMISSION

JOB #:	2006-0616	SCALE:	NTS
DRAWN:	G.A.I./S.E.T.	DWG. NO.:	PK D-1
CHECKED:	D.E.Z.	SHEET:	
TITLE:	PARK-MATELINE PIER (COLUMN & POINT LOAD)		15 OF 17
DATE:	9/01/07		

MINIMUM 3/8"x5" LG. LAG SCREWS WITH FLAT WASHERS ARE REQUIRED FOR SINGLE-PLY MATE LINES; MULTI-PLY MATE LINES REQUIRE 3/8"x7" LG. LAG SCREWS WITH FLAT WASHERS. LAGS TO BE CENTERED AT EACH FLOOR JOIST SPACE ON ALTERNATE SIDES WHERE POSSIBLE.

SHIM NOTE:
GAP AT TOP OF PIER MAY BE SHIMMED WITH HARDWOOD WEDGES AND WOOD PLATE (NOT EXCEEDING 2.5 IN. THICKNESS AND WEDGES (IN PAIRS) NOT EXCEEDING 1 IN. THICKNESS. WEDGES SHALL BE AT LEAST 4 IN. WIDE AND 6 IN. LONG. (SNUG FIT)



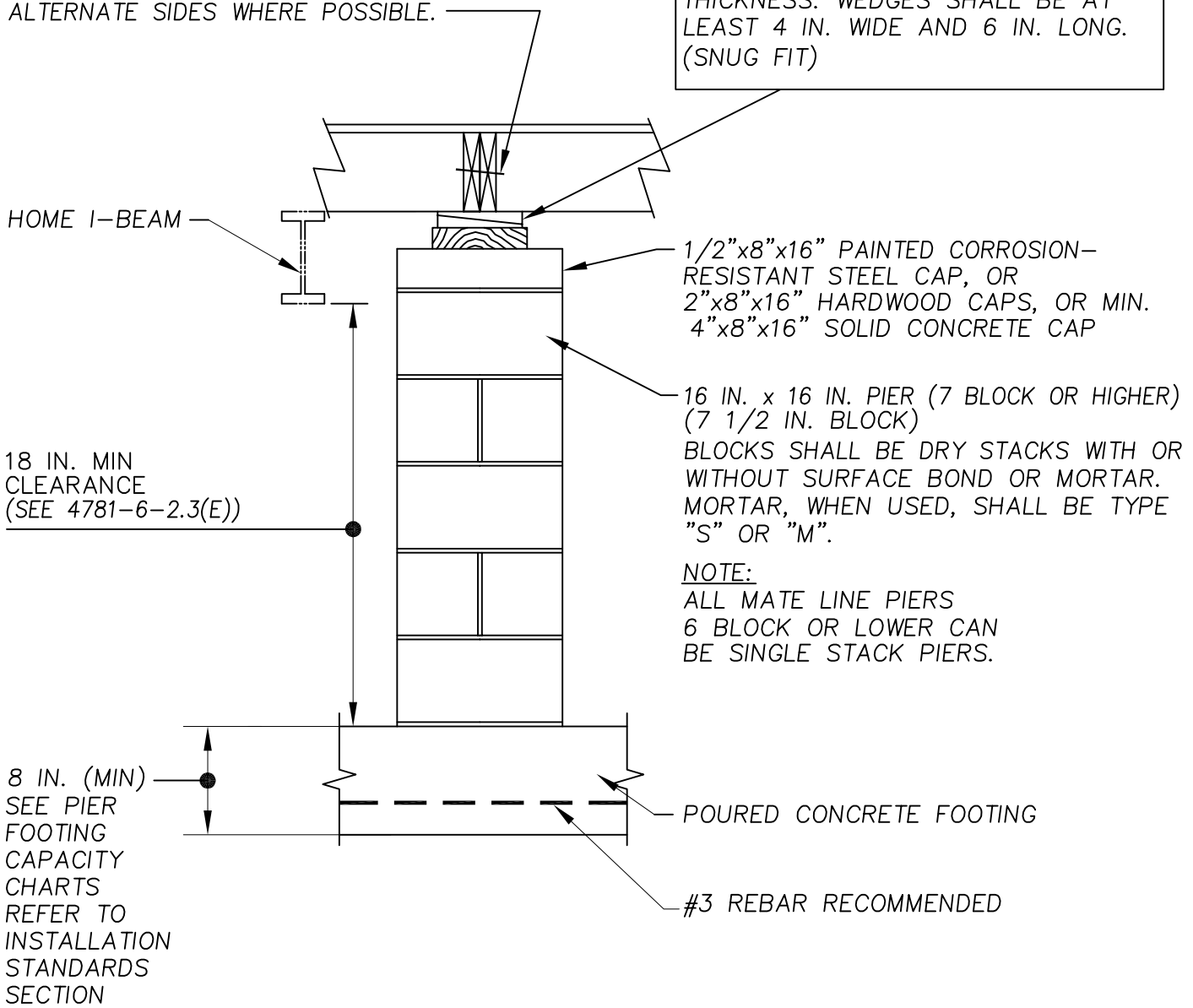
NOTE:
ALL MATE LINE PIERS 6 BLOCK OR LOWER CAN BE SINGLE STACK PIERS.

OHIO MANUFACTURED HOMES COMMISSION

JOB #:	2006-0616	SCALE:	NTS
DRAWN:	G.A.I./S.E.T.	DWG. NO.:	PK D-2
CHECKED:	D.E.Z.	SHEET:	
TITLE:	PARK-MATELINE PIER OPT. 2 (COLUMN & POINT LOAD)		16 OF 17
DATE:	9/01/07		

MINIMUM 3/8"x5" LG. LAG SCREWS WITH FLAT WASHERS ARE REQUIRED FOR SINGLE-PLY MATE LINES; MULTI-PLY MATE LINES REQUIRE 3/8"x7" LG. LAG SCREWS WITH FLAT WASHERS. LAGS TO BE CENTERED AT EACH FLOOR JOIST SPACE ON ALTERNATE SIDES WHERE POSSIBLE.

SHIM NOTE:
GAP AT TOP OF PIER MAY BE SHIMMED WITH HARDWOOD WEDGES AND WOOD PLATE (NOT EXCEEDING 2.5 IN. THICKNESS AND WEDGES (IN PAIRS) NOT EXCEEDING 1 IN. THICKNESS. WEDGES SHALL BE AT LEAST 4 IN. WIDE AND 6 IN. LONG. (SNUG FIT)



18 IN. MIN CLEARANCE (SEE 4781-6-2.3(E))

8 IN. (MIN) SEE PIER FOOTING CAPACITY CHARTS REFER TO INSTALLATION STANDARDS SECTION

NOTE:
ALL MATE LINE PIERS 6 BLOCK OR LOWER CAN BE SINGLE STACK PIERS.

POURED CONCRETE FOOTING
#3 REBAR RECOMMENDED

OHIO MANUFACTURED HOMES COMMISSION

JOB #:	2006-0616	SCALE:	NTS
DRAWN:	G.A.I./S.E.T.	DWG. NO.:	PK D-3
CHECKED:	D.E.Z.	SHEET:	
TITLE:	PARK-MATELINE PIER OPT. 3(SLAB)(COL. & POINT LOAD)		17 OF 17
DATE:	9/01/07		

MINIMUM 3/8"x5" LG. LAG SCREWS WITH FLAT WASHERS ARE REQUIRED FOR SINGLE-PLY MATE LINES; MULTI-PLY MATE LINES REQUIRE 3/8"x7" LG. LAG SCREWS WITH FLAT WASHERS. LAGS TO BE CENTERED AT EACH FLOOR JOIST SPACE ON ALTERNATE SIDES WHERE POSSIBLE.

SHIM NOTE:
GAP AT TOP OF PIER MAY BE SHIMMED WITH HARDWOOD WEDGES AND WOOD PLATE (NOT EXCEEDING 2.5 IN. THICKNESS AND WEDGES (IN PAIRS) NOT EXCEEDING 1 IN. THICKNESS. WEDGES SHALL BE AT LEAST 4 IN. WIDE AND 6 IN. LONG. (SNUG FIT)

